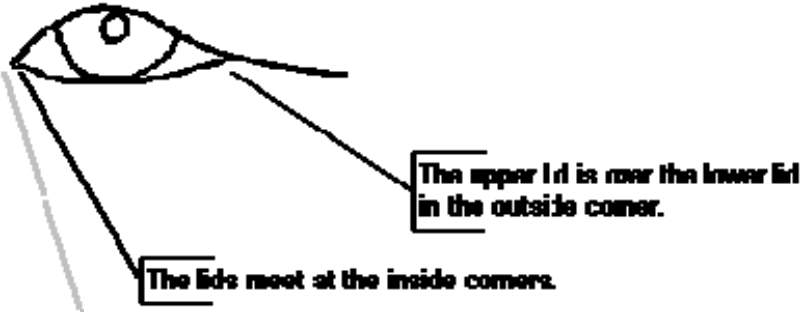


The Head

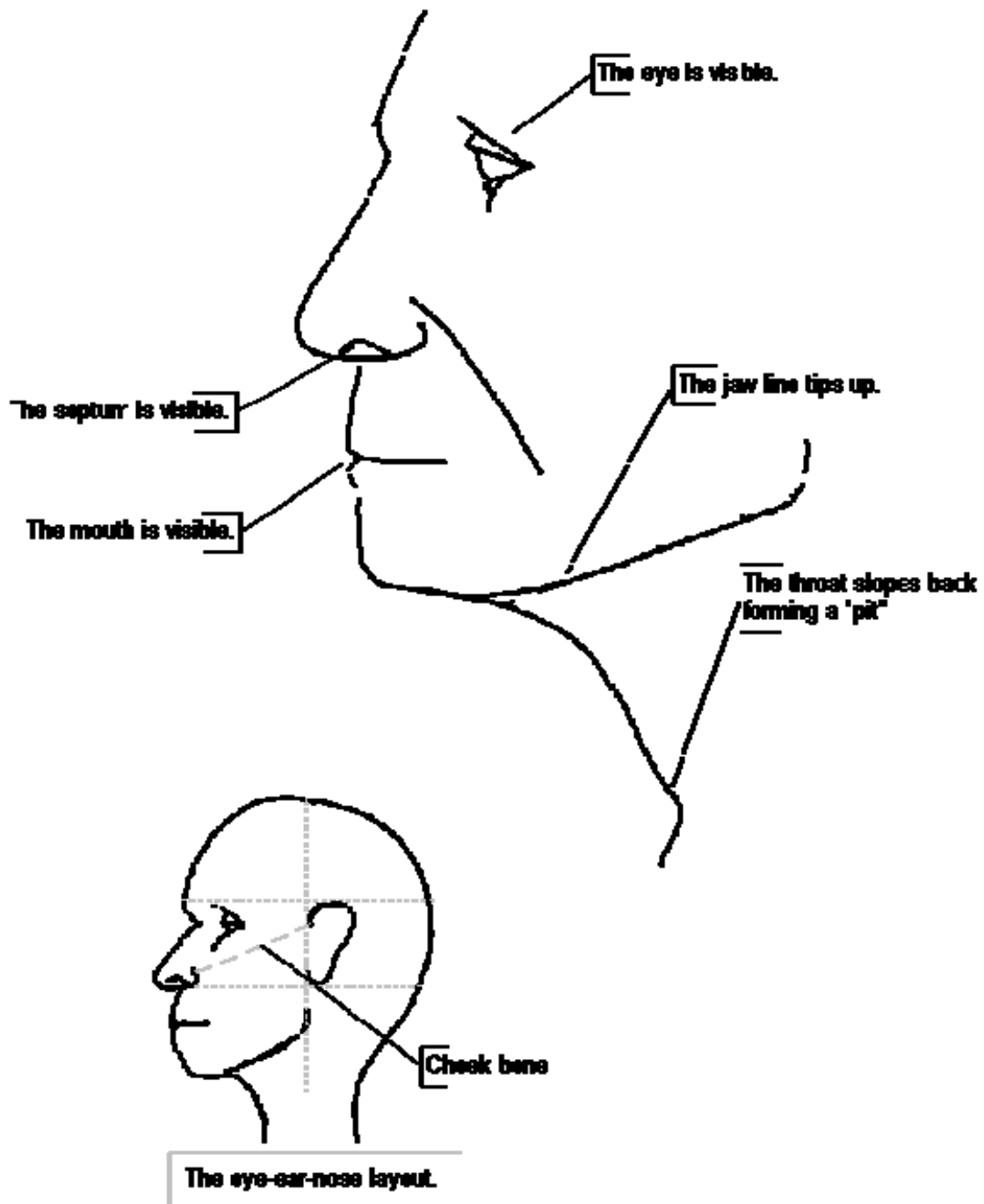
Eye Layout Rules

The following illustration shows the layout rules for the eyes.



Face Profile Rules

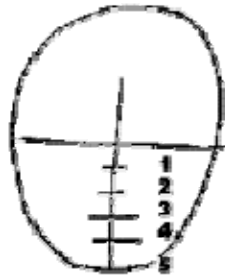
The following illustrations show the major profile features and the rules that apply to the features.



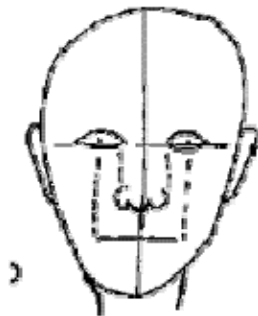
Head Layout Rules

The following illustration shows the layout rules for the adult head.

The face is five (5) eyes wide.

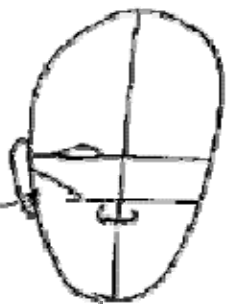


- 2-Bottom of the nose
- 3-The mouth
- 4-Top of the chin
- 5-Bottom of the chin



The eye-mouth-nose alignment.

The cheek bone runs from the top of the ear to the top of the nose



Carving the Ear

BASIC ANATOMY OF THE EAR

The top of the ear is located at the top of the eye or eyebrow.

The ear is as long as the nose.

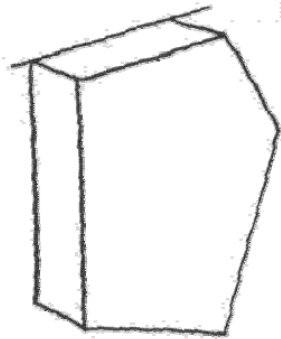
The center of the ear lies slightly behind the center of the head when viewed from the side.

The front of the ear is an extension of the back of the jaw. This means the ear starts at the very end of the jaw line.

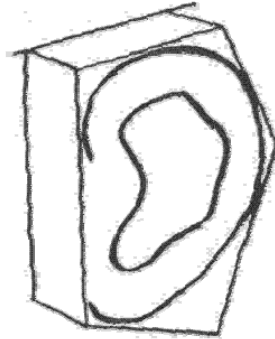
The front of the ear and the jaw are exactly in the center of the head.

The ear should slant a little from the front to the back.

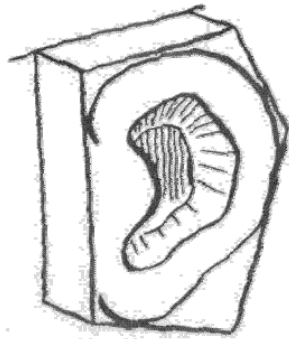
CARVING STEPS



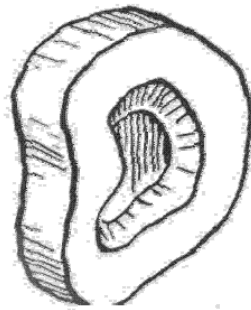
A



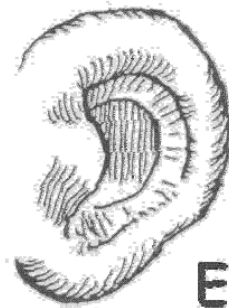
B



C



D



E

Steps in Carving the Human Ear

NOTES

The ears should be the same size and shape. They should be located evenly on the sides of the head.

Whittling ears involves completing the steps shown the above diagram:

- (A) roughed-out ear (blocked-out)
- (B) sketch the ear outline
- (C) hollow out the inside
- (D) round off the outside
- (E) finish shaping